

Redefine Learning Environment



INDOTA
Smart Education

IoT Smart Classroom

Make Learning Environment More Comfortable



Brand Introduction

The Indota concepts came to fruition within the high-tech conglomerate NWT of Zlin, Czech Republic. Back in January 2010 it established the European Indota Educational technology company. Indota was acquired November 2016 by the HAIJIE Group of China. There it thrived by integrating R&D, sales after-sales service of IoT based classroom solutions, linking furniture and technology. Indota serves the global teaching and training markets with its novel technology and quality manufacturing ability. With the establishment of wholly owned Indota BV in Assen Netherlands, the company returned to Europe January 2018. It also established operations in Hongkong and Vietnam as well as having important distributors and private branding customers serving all countries around the globe.



Overview

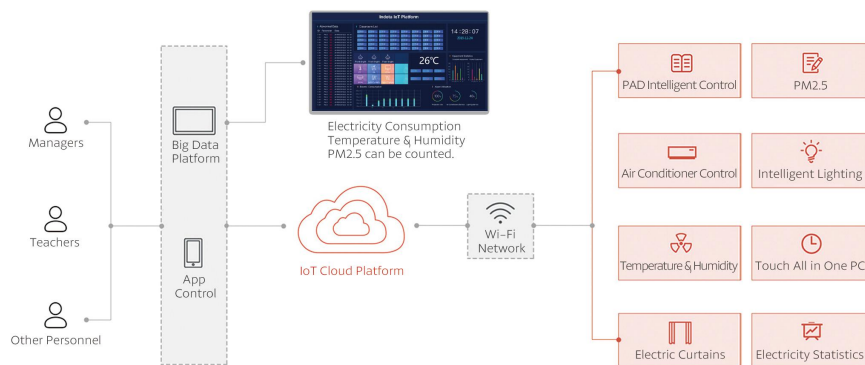
Indota IoT smart classrooms use information-based means to realize a learner-centric teaching model and divide into dynamic smart classroom, multi-group interactive smart classrooms and collaborative interactive smart classrooms.

Indota IoT Solutions create a smart, environmentally friendly, healthy and comfortable learning environment.

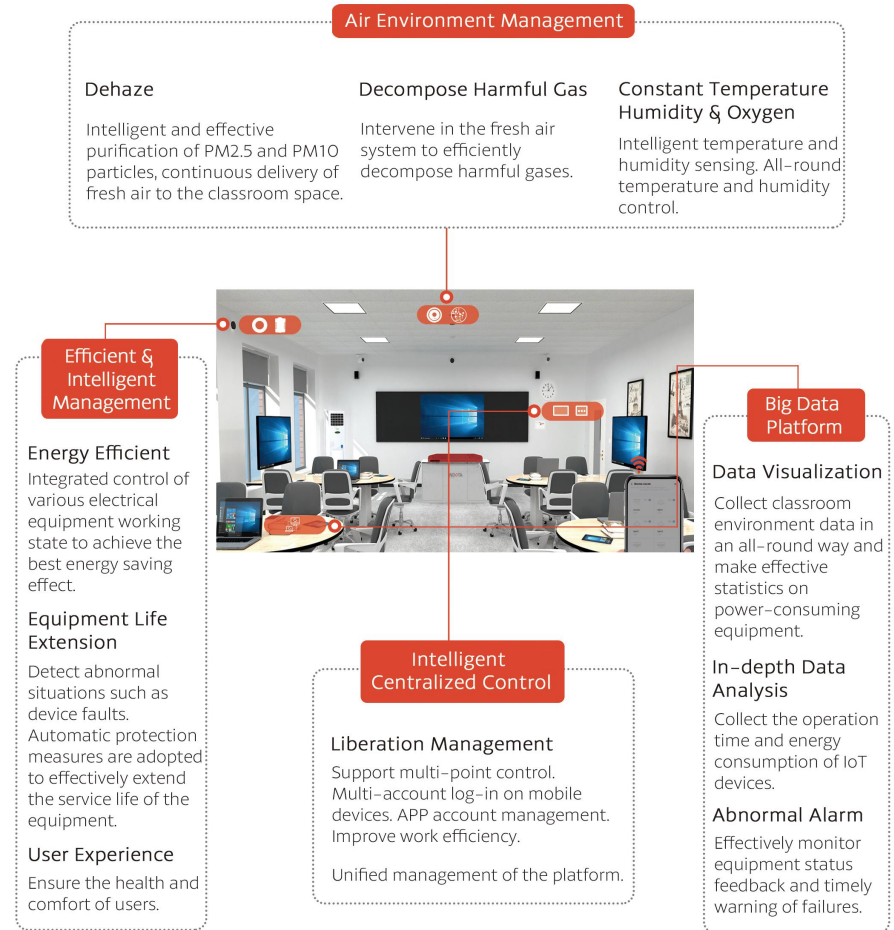
Design Concept

Combined with the research of the IoT network layer and application layer technology, using wifi technology to achieve seamless connection with the field of smart classrooms and provide the overall solution of the smart classroom IoT.

Indota IoT Classroom Topology



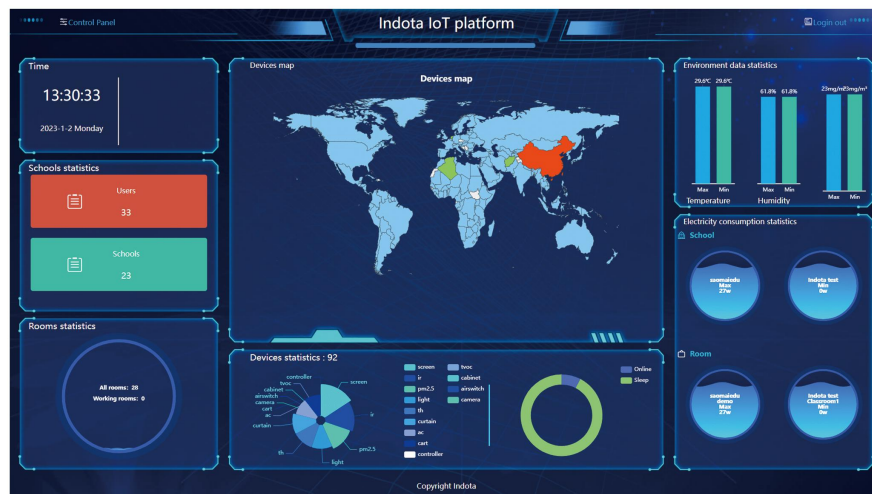
Program Composition



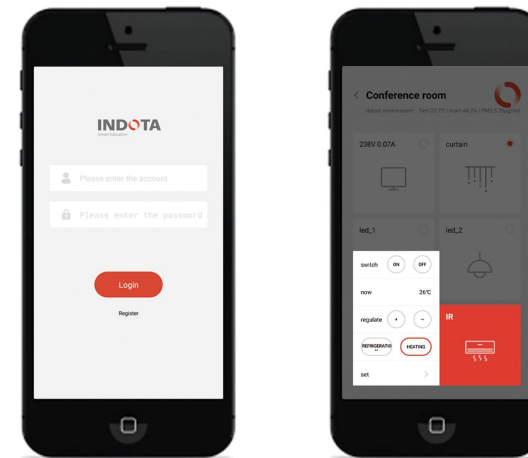
Indota IoT Solutions create a smart, environmentally friendly, healthy and comfortable learning environment.

IoT Management Platform

Centrally manage all IoT classrooms in the school, display the operating status of each classroom's lighting, electric curtains, air conditioner, smart blackboard or teaching machine, temperature and humidity etc.



APP Control



- The mobile phone APP can visually display the running status and performance parameters of the device, and conduct remote centralized control of device control to build a "smart campus".
- WiFi can be used for on/off management of equipment in various classrooms (including: lighting, air conditioning, teaching integrated machine, projection curtains and other equipment) to improve equipment and retrograde efficiency, reduce waste of resources and more efficiently assist the teaching purpose.

Indota IoT Solutions create a smart, environmentally friendly, healthy and comfortable learning environment.

Standard Module Configuration

LCD Control Panel Wireless AP Temperature & Humidity Module
Infrared Remote Control Module PM2.5 Module
Projector Module Air-conditioner Module CRT Control Module
Lighting Module



LCD Control Panel

Input: AC200V-240V 50HZ
Specification: 180*140*13mm



AP

Specification: 170*170*43mm
Power: DC12V1A



Temperature & Humidity Module

Input: AC200V-240V 50HZ
Specification: D 80mm * H 35mm



Infrared Remote Control Module

Input: AC 200V-240V 50Hz / Micro USB
Interface 5V 1A
Specification: D 80mm * H 35mm



PM2.5 Module

Input: AC200V-240V 50HZ
Specification: D 80mm * H 35mm



Projector Module

Input: AC200V-240V 50HZ
Specification: 99*55*30mm



Air-conditioning Module

Input: AC200V-240V 50HZ
Specification: 99*55*30mm



CRT Control Module

Input: RJ12 interface. No external power supply. It is used with curtain motor.
Specification: 160*21*18mm



Lighting Module

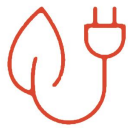
Input: AC200V-240V 50HZ
Specification: 86*86*36mm

Core Advantages



Simple & Easy to Use

Easily realize the combination of one-key switch and equipment.



Energy Saving

Control equipment usage cost and extend equipment life.



Big Data Collection & Analysis

Collect equipment status and environmental data in real time.



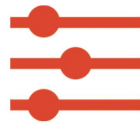
Security & Intelligence

By setting abnormal reminders, timely discover potential safety hazards and promptly notify relevant staff.



Real Time Monitoring

Real-time monitoring and control to timely grasp the teaching situation on campus.



Compatible Expansion

It can realize multiple modes such as LAN and WAN.



Intelligent Management Control

Realize intelligent management and control of the entire campus environment.

Multiple Configuration Options

3 IoT Smart Classroom Solutions Choose the One You Need

We provide 3 kinds of smart classroom solutions and support 3 kinds of solutions seamlessly.

Dynamic IoT Smart Classroom

- ✓ Smart Interactive Chair
- ✓ Intelligent Network Control System
- ✓ Smart Blackboard
- ✓ Smart Podium
- ✓ Sound System
- ✓ LCD Control Panel
- ✓ Temperature & Humidity Module
- ✓ Projector Module
- ✓ Air Conditioner Module
- ✓ Infrared Remote Control Module
- ✓ PM2.5 Module
- ✓ RF Module
- ✓ Lighting Module
- ✓ AP

Collaborative Interactive Smart Classroom

- ✓ Collaborative Tables & Chairs
- ✓ Intelligent Network Control System
- ✓ Smart Blackboard
- ✓ Intelligent Lifting Table
- ✓ Sound System
- ✓ LCD Control Panel
- ✓ Temperature & Humidity Module
- ✓ Projector Module
- ✓ Air Conditioner Module
- ✓ Infrared Remote Control Module
- ✓ PM2.5 Module
- ✓ RF Module
- ✓ Lighting Module
- ✓ AP

Multi-group Interactive Smart Classroom

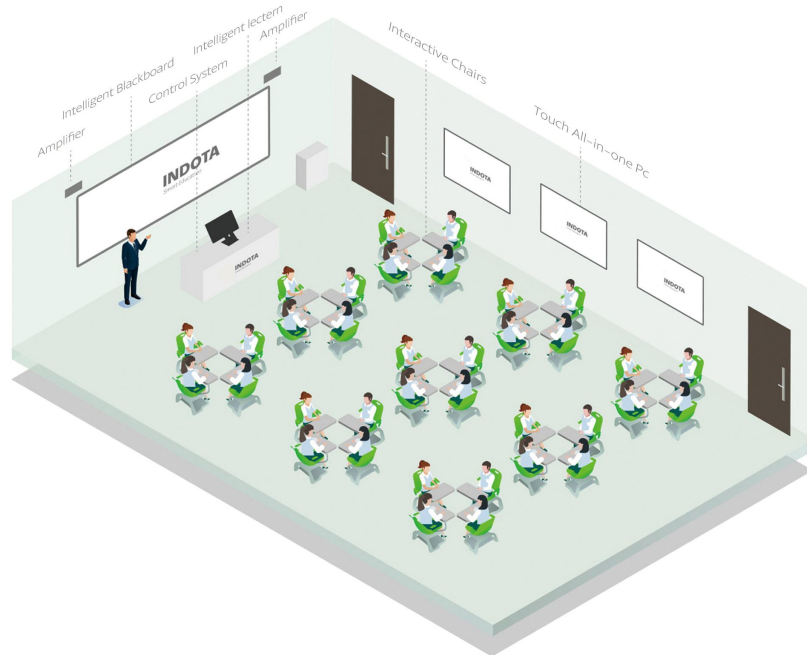
- ✓ Intelligent Conference Table
- ✓ Smart Classroom Seminar Teaching System
- ✓ Smart Blackboard
- ✓ Intelligent Lifting Table
- ✓ Sound System
- ✓ LCD Control Panel
- ✓ Temperature & Humidity Module
- ✓ Projector Module
- ✓ Air Conditioner Module
- ✓ Infrared Remote Control Module
- ✓ PM2.5 Detection Module
- ✓ RF Module
- ✓ Lighting Module
- ✓ AP



Dynamic Smart Classroom

Introduction

The dynamic smart classroom is composed of interactive chairs, interactive systems and traditional classroom display systems, control systems, sound reinforcement systems and environmental adaptations.



Overview



Comfortable Experience

High mobility. Conforms to the principle of ergonomics. The worktable can be adjusted. Comfortable for students.



Diverse Teaching Scenarios

Easily match the various layouts of the classroom.



Role Change

It changes the role of students. They can take the initiative of learning the best way.

Core Products



Intelligent Control System



Intelligent Lifting Table



Interactive Chair

Case



Collaborative Classroom in France



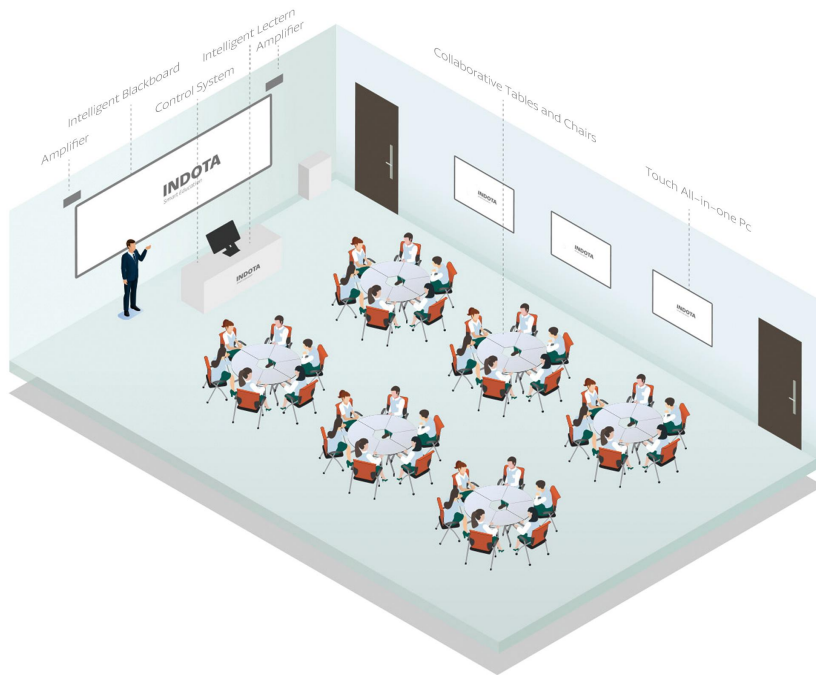
Smart Classroom in Germany



Collaborative Interactive Smart Classroom

Introduction

In the collaborative interactive smart classroom, teachers and students can splice tables and chairs at will and design the classroom layout to build exclusive small class groups for discussions. It meets the needs of different disciplines, types of grouping and teachings.



Overview



Splicing & Removable & Folding

It meets the needs of different disciplines, types of grouping and teachings.



Diverse Teaching Scenarios

Students can be grouped into different size groups according to what suits a course best in any discipline.



Remotely Control & Intelligent Management

Remotely control the actions of the equipment.

Core Products



Intelligent Control System



Intelligent Lifting Table



Collaborative Tables

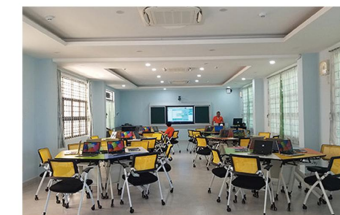


Training Chair

Case



Smart Classroom in Vietnam



Smart Classroom in Malaysia



Multi-group Interactive Smart Classroom

Introduction

It solidifies the formation of student-centered teaching. Teaching becomes interactive and flexible and each student is an active member, students see the teaching content clearly and the intensive involvement creates a good atmosphere of mutual motivation and active exploration.



Overview



Comprehensive Support

It provides comprehensive support for a series of group discussions.



Stable Interaction Pattern

The matrix switcher handles teaching information displayed on different screens.



Wireless Screen

Realize small screen and large screen interaction via wifi.



Intelligent Environment Control

Achieve the full range of IoT control function.

Core Products



Intelligent Lifting Table



Intelligent Conference Table



Intelligent Control System

Case



Smart Classroom in USA



Collaborative Classroom in Colombia

Group Teaching & Splicing & Laminate Material

Not only convenient for individual learning, but also suitable for group discussions. It meets the needs of different disciplines, types of grouping and teachings. Foldable storage to save the space.

Parameters:

Material	Aluminium + Melamine / Laminate Board
Specifications	786*580*765mm Diameter:1600mm (The size is for reference only, mainly based on the actual production size.)
Model No.	id-PJZ-F-SX06-K

Group Teaching & Solid And Durable & Save Space

Suitable for the use of multi-type smart classroom. The design conforms to the principle of ergonomics, and has high mobility, with the use of splicing table, strengthen the teaching mode of group teaching.

Parameters:

Material	Aluminum, PU cotton, PP plastic
Specifications	855*610*470mm (H*W*D)
Model No.	id-PJZ-F-SX06-K

Collaborative Table



Group Teaching

Group teaching, with mobility, to meet the use of different disciplines.



Splicing

Easy to disassemble, easy to use, can be combined according to customer demand.



Preferred Material

Strong stability and not easy to deform. The surface material is melamine/laminate board, various choice for option.

Training Chair



Group Teaching

Group teaching, with mobility, to meet the use of different disciplines.



Solid & Durable

Steel base, stable and durable, to ensure the safety of users.



Save Space

Folding and storage, saving classroom space.

Comprehensive Internet of Things management and control, with powerful multimedia interaction ability, to ensure the system work all day.

Stability and reliability as the basic design principle, low power consumption design standards. The device is highly integrated and supports long time uninterrupted operation. Compatible with campus card, effective record identity information. It can be linked with the electronic class schedule and automatically arrange the class. Support the control and management of other network control management platforms.

Parameters:

Panel	Aluminum Alloy Shell/Acrylic
Touch Screen	158*100*50mm(L*W*H)
Model No.	ZK-IoTH0402

IoT Control System



Two-part Design

7 inches control panel plus host design



Supports Multiple Switch Modes

Network centralized remote control, IC card and local central control switch mode.



Highly Integrated Meet Various Classroom Controls

Can realize the IoT control and multiple classrooms synchronous management.



Group Teaching

Flexible and easy to use, to solve the problem of group teaching.



Visual Teaching

The group discussion information can be shared synchronously and the results of the discussion can be presented.

An Effective Teaching Aid Used in The Education System

Can accommodate up to 5 people at the same time for discussion and learning, effective communication and knowledge sharing.

Parameters:

Material	Steel + Laminate Board
Specifications	Standard Overall Size 2400*1200*760mm (Not Including Bracket)
Model No.	YTZ-01/YTZ-02

Intelligent Conference Table



One-button Lift & 3 Levels of High-memory Keys & One-touch Restoration

3 levels of high-memory of one-touch restoration of the preferred height. Tabletop is equipped with a professional monitor stand, which can be stretched back and forth to adjust the viewing distance.

Parameters:

Material	Steel+Laminate Board
Specifications	Tabletop 1300 * 700mm (L*W) Bezel Length: 1300mm Width: 420mm The height can be adjusted at 700-1200mm with 40mm/s lifting speed. Bearing: 120kg
Model No.	i-desk9

Intelligent Lifting Table



One-button Lift

3 levels of high-memory keys, one-touch restoration of the preferred height.



Professional Stand

Professional monitor stand, adjust the viewing distance to relieve cervical fatigue.



Wires

Folding and storage, saving classroom space.

High Mobility to Quickly Match Various Classroom Layouts

High mobility and satisfies ergonomic principles. The writing pad can be adjusted and students of all sizes can use it comfortably.

Parameters:

Material	ABS; Nylon & Other Material for Injection Molding	
Specifications	Seat Size: 540*390mm(W*H)	Base Diameter: 600mm
	Chair Size: 600*580*890mm Height: 790mm	Panel Size: 560 * 310mm Overall Load-bearing: 100KG±5KG

Interactive Chairs



Highly Mobility

The chairs are highly mobile and can easily match the various layouts of the classroom.



Environmental Friendly

ABS engineering flame retardant plastic, nylon and other materials are used for injection molding.



Easy to Use

A cup holder Storage space under the chair.

High Security & Simple Access Operation & No Consumables in Use

Indota intelligent locker can access items in various ways such as face recognition, card swipe, fingerprint authentication, WeChat, passwords, etc., with high security and simple access operation.

Parameters:

Material	High-quality Cold-rolled Steel Plate
Specifications	Locker Size (mm): 860*1800*460(W*H*D) Single Box Size (mm): 250*270*440(W*H*D)
Model No.	CWG-F1

Intelligent Locker



Strong Expandability

Can be used in conjunction with the campus card.



Smart & Convenient

Support face recognition to access items. One person can use multiple boxes.



Wide Range Applications

Can be applied to a variety of scenarios, factories, schools, enterprises and institutions.

Movable & Comfortable & Easy to Use

The "shared" design is highly mobile and can be used as both a sofa and a desk. It is the best choice for teaching and training.

Parameters:

Material	Cotton/Leather, ABS
Specifications	Table: 500*300mm(L*W) Seat: 680*580*905mm(L*W*H)

Interactive Sofa Chair



Humanized Design

Humanized design, fully enclosed sofa chair, comfortable.



Easy to Use

with writing board on the side, rotatable, mobile phone/tablet stand.



Flexible Combination

Storage space under the seat cushion for easy storage.

CM26-Charging Cart(AC)



Product Specifications	
Function	Store and charge devices
Size	(720L*580W*953H)mm +wheels
Capacity	36 devices up to 14 inch
Doors	2 doors. Door angle of opening: 270°
Compatibility	Laptops and tablets
Material	ABS & Steel
Wheels	4 wheels with brakes
Charging	3 banks of 12 AC power strips
Electric Parameter	Input Voltage: 100V 240V Rated current: 10A 50/60 Hz
Power Management System	3 modes: Always on, timer mode, cycle mode.
Device Trays	ABS plastic separator with cable management
Cooling	Ample convection ventilation
Certification	CE/Rohs

CM28-Charging Cart(AC & USB & UVC)



Product Specifications	
Function	Store, charge and synchronize devices. (Ac version: no synchronization) uvc version: disinfect bacteria up to 99%
Size	(650L*601W*1000H)mm + wheels
Capacity	AC version: 33 devices up to 14" USB & UVC version: 36 devices up to 14"
Compatibility	Designed for tablets
Material	ABS & Steel
Wheels	4-5" with brake
Charging	3 banks of 12 USB/AC power strips
Electric Parameter	Input Voltage: 100V-240V Rated current: 10A 50/60 Hz
Power Management System	AC Version: Always on, timer mode, cycle mode. USB & UVC Version: Timer mode only
Device Trays	ABS plastic separator with cable management
Cooling	Ample convection ventilation
Certification	CE/Rohs

HJ-27G Digital Podium



Product Specifications

1. Equipped with Touch monitor + OPS computer.
2. Power on/off by the RFID card.
3. Comes with microphone and lamp socket on the surface.
4. Height adjustment that allows seated and standing use.
5. Power, USB connection port on top panel.
6. Placed on heavy duty floor module, with casters or fixed feet to hide transmitters that connect the PC to white board or touch monitor.
7. Comes with one or two side tables for document camera and / or laptop position.
8. HDMI output & Input.
9. Amplifier & document camera are not be equipped as standard.

SMART PODIUM AIO 29



Product Specifications

1. Overall Dimensions: 1200*650*1000mm (Length*Width*Height)
2. The overall podium adopts an open design.
3. The podium is made of steel and wood and the main material is 1.2mm steel plate.
4. The top is made of felt material, which can play a dust-proof and wear-resistant effect.
5. The countertop integrates a 23.8-inch 10-point touch monitor.
6. Reserved interface panel: 2*USB and cable management box.
7. The fixed angle of the display is 18°. (Angle adjustment is optional.)
8. Reserve a keyboard drawer below the countertop.
9. The podium can be equipped with INDOTA intelligent control system (LCD panel). It can realize IoT management and control.
10. Cabinet: Reserve a 19-inch rack on the right side.
There is a large space on the left side to store items by yourself.
11. A number of cooling holes are reserved under the podium to allow the heat to be dissipated in time.
12. The logo can be customized on the back of the podium.

SMART PODIUM AIO 26



Product Specifications

1. Overall Dimensions: 725*700*1124mm (Length*Width*Height).
2. The main material is 1.2mm high-quality steel plate.
3. Two microphone ports are reserved above the table.
4. Built-in 23.8-inch touch monitor, electric adjustment of angle 6.5°-26.5°.
5. Built-in 9U, 19-inch standard rack.
6. Metal sliding cover above the monitor.
The slide cover not only protects the monitor, but can also be used to hold other items such as a laptop.
7. Reserve a pull-out keyboard drawer below the monitor.
8. The right side of the podium is equipped with a pull-out drawer.
9. An aluminum alloy interface panel is integrated on the side of the podium.
Integrated interfaces include: HDMI*1, USB*2, VGA*1, power socket*1.
10. A number of cooling holes are reserved under the podium to allow the heat to be dissipated in time.

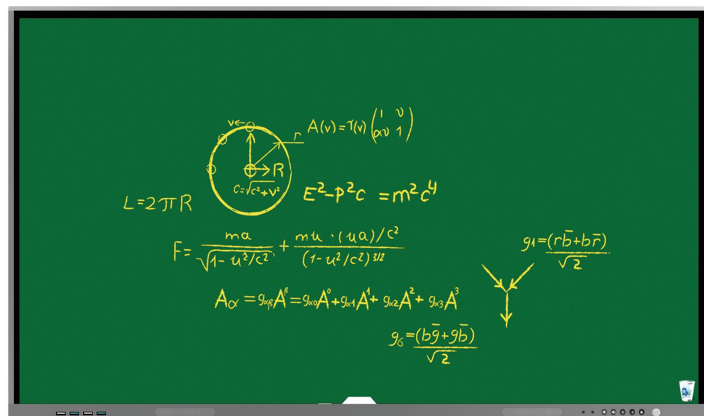
IoT E-IP28



Product Specifications

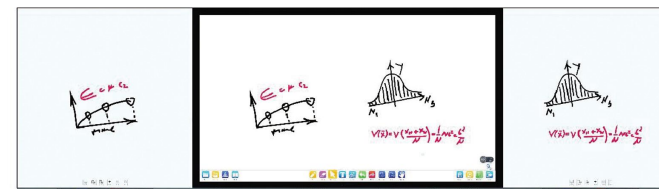
Dimensions	1100*740 *890+420mm(length*width*height+lifting stroke, the size of the podium is only for reference).
Highly Integrated	Built-in 10U 19-inch standard rack and reserved desktop host machine. Built-in 23.8-inch capacitive touch display. The display angle is dynamically adjustable from 28° to 46°.
Electric Height Adjustment	The height of the podium can be adjusted by electric lift. Adopt German silent lifting technology, 850mm-1220mm dynamic adjustable.
Memory Function	User memory function for the height of the podium and the angle of the display. The height and display angle can be memorized after the user inserts the card for authorization and the height and display angle of the memorized table can be automatically adjusted next time.
Electric Lift Microphone	The electric lift microphone has wireless charging and ultraviolet disinfection functions. After authorization, the microphone disinfection compartment can be opened through the panel.
Wireless Charging	Support Android, Apple mobile phone wireless charging, up to 15W.
LCD Operation Panel	7-inch LCD capacitive touch screen, built-in card, fingerprint management system. After authorization, it can control the height of the podium, the angle of the display screen, the electric microphone, the electromagnetic lock, the computer switch, etc.

Interactive Flat Panel



	Diagonal Size	65inch	75inch	86inch
Display Parameter	Effective Display Area	1430(H) x 804(V)	1651(H) x 930(V)	1897mm(H) x 1068mm (V)
	Display Ratio	16:9	16:9	16:9
	Brightness	350cd/㎡	350cd/㎡	350cd/㎡
	Contrast Ratio	4000:1	4000:1	4000:1
	Backlight Type	DLED	DLED	DLED
	Viewing Angle	177°(V)/177°(H)	177°(V)/177°(H)	177°(V)/177°(H)
	Resolution	3840(H) X 2160(V) 4K	3840(H) X 2160(V) 4K	3840(H) X 2160(V) 4K
	Display color	1.07 billion colors	1.07 billion colors	1.07 billion colors
	Audio Output Power	2X15W	2X15W	2X15W
Android Parameter	Android Frequency	Quad-Core ARM Cortex-A55 / Mali-G52 MP2(2EE)	Quad-Core ARM Cortex-A55 / Mali-G52 MP2(2EE)	Quad-Core ARM Cortex-A55 / Mali-G52 MP2(2EE)
	Version	Android 11.0	Android 11.0	Android 11.0
	Memory	4GB DDR	4GB DDR	4GB DDR
	FLASH	32GB EMMC (optional 64GB)	32GB EMMC (optional 64GB)	32GB EMMC (optional 64GB)
	WIFI	2.4G+5G (with Bluetooth 5.0)	2.4G+5G (with Bluetooth 5.0)	2.4G+5G (with Bluetooth 5.0)

IoT Electronic Blackboard



Advanced technology and high integration, revolutionary combination of traditional and modern teaching.

IoT Electronic Blackboard is the latest solution to digitize writing!

Interactive LED Touch Screen + Capacitive Writing Sub-board

Easy to write: The film-forming pen has a long writing radius, writes faster and saves effort.

Easy to erase: Pen writing will form a film, and equipped with a honeycomb eraser to clean.

Easy to operate: Pen-lift sensing function, writing color synchronization.

Hotkeys to quickly control the main screen functions, such as page up/down, returning to desktop, saving, etc.

Pen writing is synchronized with main screen display 1:1, smart eraser for synchronous erasing.

Preserve the original handwriting and make high-quality school-based resources.

Review at any time, easy to take notes.

White writing surface is the best contrast for color writing, beautiful writing.